

Upcoming Events & Conferences:

International Conference on Communication in Healthcare

Oct. 4-7, 2009, Miami Beach, FL.
www.aachonline.org

40th Biennial Sigma Theta Tau Convention

Oct. 31-Nov. 4, 2009, Indianapolis,
IN. [www.nursingsociety.org/
STTIEvents/BiennialConvention/Pages/
biennialconvention.aspx](http://www.nursingsociety.org/STTIEvents/BiennialConvention/Pages/biennialconvention.aspx)

Annual Conference of the National Association of Medical Simulators and Clinical Skills Network

Nov. 25-27, 2009, Manchester, England.
www.namsconference.org

Third Annual WISER Nursing Symposium

Dec. 3-4, 2009, Pittsburgh Airport
Marriott. www.wiser.pitt.edu
or call 412-648-6073.

10th Annual International Meeting on Simulation in Healthcare

Jan. 23-27, 2010, Phoenix, AZ.
www.ssih.org/public

Ottawa 2010 Conference on Assessment in the Healthcare Professions

May 15-20, 2010, Miami, FL.
www.ottawaconference.org

13th International Conference on Emergency Medicine

June 9-12, 2010, Singapore.
www.icem2010.org/index.htm

WELLSCenter

*Work, Education & Lifelong
Learning Simulation Center*

1999 N. Fitzsimons Pkwy., Ste. 180,
Aurora, CO 80045

PHONE 303-326-0674

FAX 303-326-0673

Burn Moulage

by *Veronica Baiamonte*

Basic Burn Moulage

I found this moulage at several different sites online as well as in the Ben Nye Trauma Simulation Guide by Paul J. O'Dell and Dana Nye. This is a messy burn moulage, especially with the 3rd degree burn. Unless you are OK with the clean up I would limit this technique to small areas on the mannequin. It can be used, however, successfully for large area burns. I have used this technique twice for a burn scenario on the burn unit at University of Colorado Hospital. The moulage was realistic enough that during the scenario the participants calculated the percent of the burn (80%) as well as estimated the depth of the burn from the moulage. On the negative side, the burn scenario included defibrillation of the patient with Stat-Padz, and by the second run of the scenario the Stat-Padz would no longer seal due to the petroleum jelly used in the moulage.

Materials:

1. Ben-Nye CK-5 Burns & Blisters F/X Color Wheel or red oil based makeup or grease paint
2. Petroleum jelly
3. Two ply tissue
4. Charcoal dust
5. Makeup sponges
6. Round makeup brush or similarly sized paint brush

1st degree burn

Burn usually limited to the outer layer of the skin. This degree of burn appears red such as sunburn.

To simulate a 1st degree burn:

1. Apply red makeup to the mannequin with a make-up sponge.
2. Dust make-up with setting powder to set, or spray with Krylon Fixer Spray.

(continued on next page)



1st Degree Burn

(Burn Moulage – continued from previous page)

The fixer spray sets the makeup so it does not smear, but it may also give the area treated with the fixer spray a shiny appearance. After using the fixer spray, dust the area with setting powder to cut the shine. Also, if you use the spray too closely or use too much of the spray the area may spot and appear dappled. This is not necessarily bad. This can give the impression of the skin about to break out into blisters, but if you want a smooth red burn apply the spray fixer from a good distance and do several light applications instead of one heavy application.

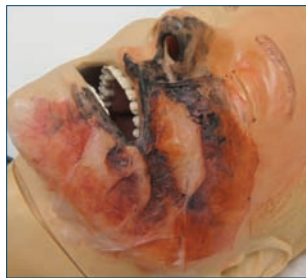
2nd degree burn

Burn deeper than a 1st degree burn involving the outer layer of the skin and the deeper layers of the dermis. The 2nd degree burn also appears red and includes superficial blistering of the skin.

To simulate a 2nd degree burn:

1. Apply red makeup to the mannequin with makeup sponge.
2. Over the reddened skin, apply petroleum jelly in mounds to make blisters.
3. Cover petroleum jelly with tissue. Use finger to gently tap around and on blister mounds to attach tissue to the blisters.
4. Using brush apply petroleum jelly and makeup on top of the tissue to complete the burn. Use deeper colors to enhance the degree of burn.

Peeling skin can be created by peeling away one or both layers of the tissue. Tear the tissue to get the jagged edges from torn away skin. On the petroleum mounds pop through and tear away the tissue to create open, oozing blisters.



3rd Degree Burn



3rd Degree Burn Detail

3rd degree burn

This burn is deeper than 2nd degree burn involving the tissue beneath the skin. The outer layer of the skin will be burned away and may appear charred.

To simulate a 3rd degree burn:

1. Create a second-degree burn.
2. Using the darkest makeup and/or charcoal dust to create areas that have been burned away or charred. Follow the patterns that have already been created in the 2nd degree burn to get a realistic look to the damage.

With the 2nd and 3rd degree burn you cannot set the makeup. The Krylon Spray will not work over the petroleum jelly and the setting power will just be absorbed.

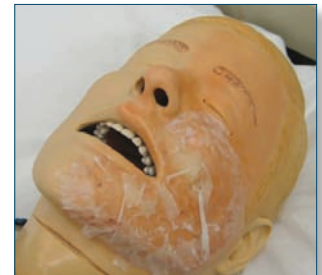
2nd Degree Burn:



Create 2nd Degree Burn: Step 1



Create 2nd Degree Burn: Step 2



Create 2nd Degree Burn: Step 3



Create 2nd Degree Burn: Step 4



2nd Degree Burn Detail

GAUMARD: Back to school special!

Gaumard is having a special on the new S2000 Susie and S3000 Adult Hal simulators – you can purchase both for \$49,995! Given the many features of each mannequin this is a great deal.

Features of both mannequins include:

- Active eyes with light sensitive pupils
- Airway programmable
- Bilateral IV and IM
- Bilateral Osat using real monitors
- Bilateral needle decompression and drainage sites
- Bowel sounds four quadrants
- Breathing with multiple airway sounds
- Breast Exam with interchangeable inserts
- Catheterization male and female
- Circulation with multiple heart sounds and 12 arterial sites
- Colostomy and ileostomy care
- Color change responses to physiologic condition and interventions
- Convulsions and tremors
- Diabetes package includes finger stick and ulcers
- Enema
- ECGs generate in real time
- Defibrillate, cardiovert and pace anteriorly
- Gynecologic package with interchangeable inserts
- Instructor control using tablet PC at distances to 300 meters
- Place NG/OG tubes
- Real time performance log
- Rechargeable battery with more than 4 hours between charges
- Sensors track student actions
- Save caregivers performance and link with A+V camera systems
- Share images such as x-rays, CT scans, lab results
- Tablet PC included with each product
- Tetherless technology pioneered by Gaumard in 2004
- Use our preprogrammed scenarios, modify them or create your own
- Wireless streaming audio; or create vocal responses

Optional:

- A+V Recording System
- Configurable 17 in AC monitors
- Configurable 12 in DC monitors
- Infarction Module 12 lead
- Casualty Kit
- Roller case
- Trauma arm + leg

For more information please contact:

Kathy O'Brien, RN, BSN

Gaumard Scientific — Central Sales Territory Manager

cell: **(305) 878-1225**

fax: **(913) 685-2706**

kathy@gaumard.com

LAERDAL:

Laerdal Medical, in conjunction with The University of Miami's Gordon Center for Research in Medical Education, is in the final stages of re-developing the Emergency Preparedness Scenarios – Terrorism package to function on Laerdal's VitalSim-capable Simulators.

This product includes a binder of support materials including a Personal Protective Equipment (PPE) Poster, Learning Objective Poster, and 25 validated Scenarios geared toward the DHS's National Planning Scenarios. Initially developed for use with Laerdal's SimMan®

Advanced Patient Simulator, these scenarios are ideal for use on the VitalSim product platform because it offers high quality VitalSim technology and fidelity at a reasonable cost to the consumer.

For more information please contact:

Bob Jacob, Laerdal Medical Corporation

Cell 845-240-4529

bob.jacob@laerdal.com

METI *Announces the Nurse Residency Program*

The METI Nurse Residency Program is designed to provide hospitals with the educational tools they need to reduce the length and associated costs of new nurse orientation and increase the quality of patient care through a new training approach using simulation-based education. The program provides a consistent, replicable orientation process that supports the ability to effectively evaluate competency development, provides real-life standardized clinical experiences and allows detection of problems early for successful remediation.

Nurse Residency Learning Modules The Nurse Residency Program is made up of seven learning modules covering all levels of nursing care:

- Adult Acute Care Nursing
- Adult Critical Care
- Pediatric Acute Care Nursing
- Pediatric Intensive Care
- Mother-Baby Care
- Neonatal Intensive Care
- Perioperative Nursing
- Emergency Department Transition
- Experienced Nurse Orientation

The Nurse Residency Program is already successfully in use at the following health care institutions:

- Providence Health Care System, Anchorage AK
- Dayton VA Medical Center, Dayton, OH
- Sarasota Memorial Hospital, Sarasota, FL
- Hospital and Health Care Corporation, NY, NY

For more information, go to:

http://www.meti.com/products_lm_nrp.htm

What's Happening at the WELLS Center:

WELLS Center to Host a 'Tetherless Mannequin' Open House

Because tetherless mannequin technology will soon be the standard, the WELLS Center will devote its March 2010 Simulation Development Group meeting to showcase this latest technology in mannequins.

The Open House event will be held on March 31, 2010, from 12:30 to 4:30. Vendors, Gaumard, Laerdal, and METI, will have technicians on hand to present their products, offer information on their latest technology and answer participants' questions. The agenda will roughly take place as follows:

- 12:30 - 2:00 pm Participants may look and work with the tetherless models on display. Each vendor can feature up to two models. Coffee, water, and soft drinks will be provided.
- 2:00 - 3:00 pm Each vendor will have up to 20 minutes in the classroom to present their tetherless mannequin technology to participants.
- 3:00 - 3:45 pm Q&A in the classroom.
- 4:00 - 4:30 pm Participants may take another look at the mannequins.

The January Sim Development Group meeting

will feature guest presenters from the community. We are seeking individuals or groups to present on simulation best practices from their facility and/or how they have integrated simulation into their units. Speakers will present for 15-minutes, followed by Q&A. Please come share your success stories with the group! Anyone interested in presenting should contact Brad Runzel at brad@coloradosimulationcenter.org