

The WELLS Center is taking clinical education in Colorado to a new level. We hope you'll join us on our journey.

*“The days of medical and nursing students practicing on real patients might be numbered. Today, many doctors and nurses in training are making their first diagnoses — and their first mistakes — on plastic, wires and computer circuits rather than flesh and blood.”*

— eSchool News, Aug. 4, 2004

**WELLS**Center  
*Work, Education and Lifelong  
Learning Simulation Center*

## Project Partners

Colorado Department of Labor and Employment

Colorado Workforce Development Council

University of Colorado Hospital

Colorado Center for Nursing Excellence

University of Colorado Health Sciences Center -  
Center for Human Simulation

Touch of Life Technologies, Inc

Colorado Area Health Education Centers

Colorado Simulation Development Group

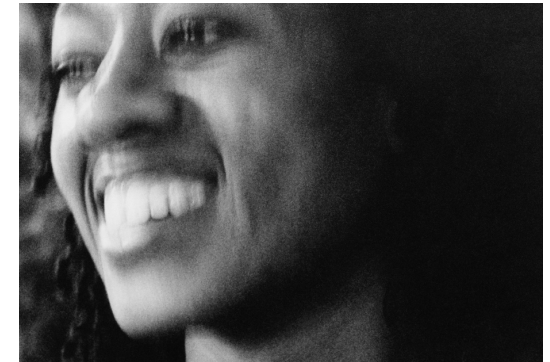
For more information  
about the WELLS Center, call  
303-326-0674 ext. 10

or e-mail  
wells\_admin@coloradosimulationcenter.org

Also, please visit the WELLS Center website at  
[www.wellssimulationcenter.org](http://www.wellssimulationcenter.org)

**WELLS**Center  
*Work, Education and Lifelong  
Learning Simulation Center*

1999 N. Fitzsimons Parkway, Suite 180  
Aurora, CO 80045



*Enhancing*  
patient safety

*Integrating*  
art and science

*Improving*  
education and care

**WELLS**Center  
*Work, Education and Lifelong  
Learning Simulation Center*



**H**igh-quality medical care combines empathetic attention to patient needs with high-order diagnostic and clinical skills.

Yet access to clinical education is a challenge for many students and medical professionals in Colorado. Limited training opportunities and a shortage of sites and staff able to mentor students combine to create a bottleneck in the preparation of much-needed nurses and physicians. The problem exists both for students who must prepare for their careers and for practicing professionals who wish to enhance their skills.

Now, though, clinical education in Colorado takes a giant stride forward – with the Work, Education and Lifelong Learning Simulation (WELLS) Center.

For the first time in Colorado, one facility offers a complete array of state-of-the-art patient simulation tools and curricula for building clinical knowledge. Students, faculty, practicing nurses and physicians from throughout Colorado can enhance their diagnostic and clinical skills at the WELLS Center either on-site or at their healthcare facility or academic institution.

Here's what you'll find at the WELLS Center:

- Computer-driven mannequins that can simulate virtually any type of clinical experience — from emergency room situations to surgery, from heart attacks to births to allergic reactions and much more.
- VH Dissector™, a cutting-edge, interactive computer program for learning anatomy and virtual dissection. The VH Dissector™ will be configured to work in conjunction with the mannequins for a truly integrated learning opportunity.
- Multiple services such as: Faculty development workshops, critical care nursing training, onsite and offsite simulation training events, and consulting services.

Housed in the BioScience East building at the Colorado Science and Technology Park at Fitzsimons, the WELLS Center represents a unique collaboration among educators, providers and policymakers.

**WELLS**Center  
*Work, Education and Lifelong  
Learning Simulation Center*

1999 N. Fitzsimons Parkway, Suite 180  
Aurora, CO 80045